



Award winning, beautifully weathered redwood paneling in a classic chevron pattern. The self-similar, repeating geometric chevron pattern has been utilized in design as far back as 1800 BC. The naturally distressed redwood patina associated with the Northern California coast in a chevron pattern creates added visual delight. Material is also excellent for cladding, wainscoting and similar applications.

Allowed Application Areas

INTERIOR			EXTERIOR	
Floors	Walls	Ceilings	Siding	Decking
No	Yes	Yes	No	No

Approved Installation Methods

- Nail/Staple/Cleat
- Glue & Nail (100% moisture-curing polyurethane or silane-modified polymer - AXIOS or MS-Polymer)

Acclimation

The planks should be stored in a clean, dry, controlled environment between 60°F (16°C) and 80°F (27°C) and 35% to 55% RH, until the wood has achieved equilibrium moisture content. See the [TerraMai Flooring/Paneling Acclimation Instructions](#) for further information.

Options

Class A Flame Retardant

Profile

S3S - T&G, Square Edge



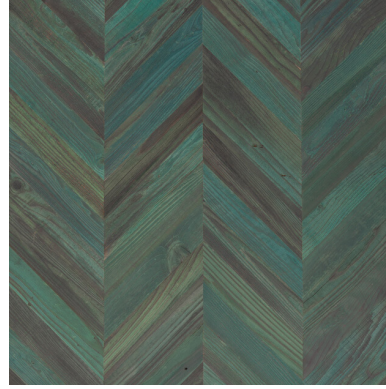
TERRAMAI

LOST COAST REDWOOD CHEVRON SOLID PANELING

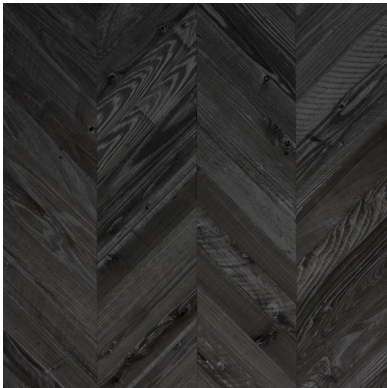
Wood is a natural material. Variation in color and grain pattern are to be expected.
For more information or to place an order, please contact your [local TerraMai Rep.](#)



SKU	841
Finish Option	Unfinished
Face Width	3" (76mm)



SKU	843
Finish Option	Copper Patina
Face Width	3" (76mm)



SKU	844
Finish Option	Faux Sugi Ban
Face Width	3" (76mm)



SKU	845
Finish Option	Fog
Face Width	3" (76mm)

Species	<i>Sequoia sempervirens</i>
Source	Reclaimed Redwood from aging structures in the San Francisco Bay Area.
Character	Heavy to light weathering. Occasional unfilled fastener, insect or other through holes. Tight knots up to 3" wide with some missing knots. Seasoning checks and end-splits not to exceed 4". Possible oxide and other staining, along with other evidence of prior use and history.
Finish*	Zero-VOC clear oil, low-VOC polyurethane, or unfinished
Thickness	1/2" (13mm)
Width	3" (76mm)
Length	18" (457mm)
Construction	Solid
Wear Layer	3/16" (5mm)
# of Backer Plies	N/A
Filler	No
Janka/Hardness	450 lbs (2 kN)
Moisture Content	6%-9%
Knots	Tight knots up to 1-1/2" with some missing knots, seasoning checks, and end splits not to exceed 4". Possible oxide and other staining.
Nail Holes	Occasional unfilled fastener, insect or other through holes.
Saw Marks	Yes
Grain	Mixed Grain
Density	26 lbs/ft ³ (704.8 kg/m ³)
Packaging	Palletized

*Custom finishes available.

For more information on installation guidelines, please visit TerraMai.com and see [Flooring Installation Instructions](#) or [Paneling Installation Instructions](#).

CERTIFICATIONS



FSC Recycled 100% - FSC-C021798



HPD Certified



VOC Reduction - Feature 4
Toxic Material Reduction - Feature 25

CONTRIBUTES TO TO LEED® V4

EQ Credit: Low-Emitting Materials - Flooring
(1-3 Points)

MR Credit: Building Life-Cycle Impact Reduction, Option 3
(2-5 Points)