

# TERRAMAI

---

## ACOUSTIC WALL PANEL INSTALLATION GUIDELINES

[TerraMai.com](http://TerraMai.com)

8400 Agate Road, White City, OR 97503

800.220.9062

# INTRODUCTION

TerraMai Acoustic Wall Panels is perfect way to add rich color and fantastic texture to walls. Installation is fast and easy. Multiple patterns, species, and finishes are available to offer exciting new looks to enhance any space. Customization is also available. Please contact your local TerraMai sales representative for more information.

## MATERIAL STORAGE

TerraMai Acoustic Wall panels are shipped horizontally in a crate. The panels should be stored in the crate in a clean, dry, temperature-controlled environment between 50°F (10°C) and 80°F (27°C), and a humidity-controlled environment between 30% to 50% RH until ready for installation. Never store the panels outside or expose to water or excessive moisture. Never store panels leaning against a wall as warping may occur.

## HANDLING

Acoustic Wall Panels range from 1' (304mm) to 2' (608mm) wide by 7' 10-1/2" (2400mm) long, and most panels weigh more than 24 lbs (11kg). Take care when handling always grasping both sides of the panel to avoid stress concentrations on individual slats.

## INSTALLATION SUBSTRATES

The surface where the panels will be installed must be clean, flat, dry, and structurally sound. Follow all installation requirements to comply with ceiling or wall system manufacturer requirements and local building code. Proper surface preparation is key to successful installations. Never install Acoustic Wall Panels on surfaces that experience water exposure, excessive moisture conditions, or excessive heat. Protect panels from air blowing directly from HVAC ducts, otherwise checking, cracking, warping, or twisting may occur.

## PANEL CUTTING & FABRICATION

The acoustic backer may be cut with a sharp utility knife when trimming the width of the panel. When trimming the length of the panels across slats, use a sharp, fine cut carbide blade, minimum 60-tooth, or better. Remove all staples from the back of the panel that may be along the cut line. It is recommended to use removable 3M #2080 Blue tape along all cut lines on wood to help prevent tear-out or finish chipping, but do not apply to acoustic board, and remove tape from wood within 20 minutes. For cutouts in the panel for outlets, switches, lighting, etc., the use of a spiral saw is recommended.

Always properly support the panel and wear all appropriate protective equipment, including safety glasses, ear plugs, and approved dust masks.

# WALL INSTALLATION METHODS

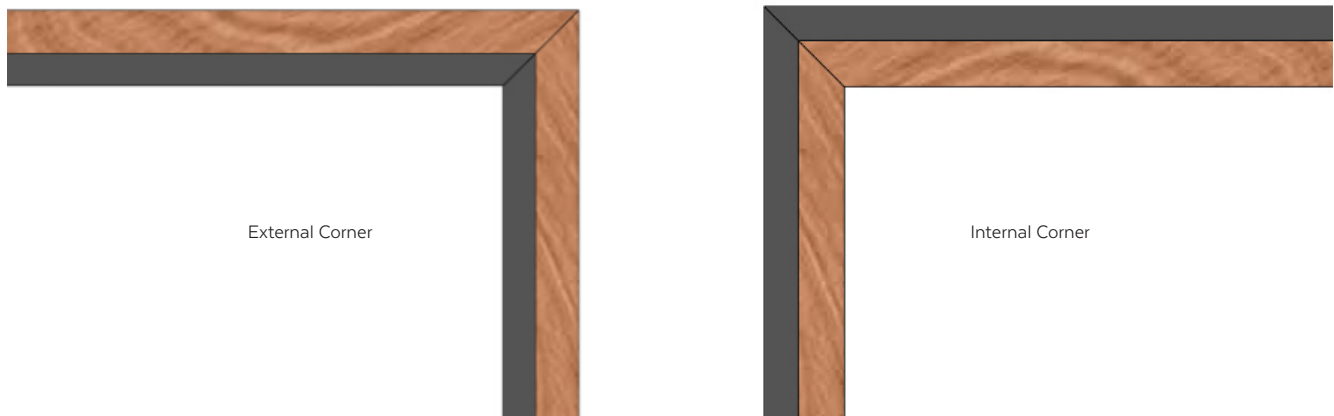
Prior to installing panels in wall applications, it is critical to consult with a local engineer to ensure code compliance, especially when panels are to be installed in high areas. It is up to the installer to choose the most suitable method of installation for the panels for the application. However, two of the most common methods are face screwing through the acoustic backer into approved substrates or using adhesives. Care must be taken in selecting any adhesive. A quality elastomeric grab adhesive should be used, ensuring that the adhesive manufacturer recommends the adhesive for use with PET acoustic boards and the substrate of the wall. While Z-clips may be used, they would need to be fastened to the back of the panel through the acoustic backer and into the slats, making sure fasteners do not protrude through or outside of the slats.

Note: Panels may be hung with the slats running vertically, horizontally, or at specified angles. However, slats run horizontally or at shallow angles may be prone to damage in public spaces as occupants attempt to climb or hang things on the walls. TerraMai accepts no liability for damage or injury resulting from these actions.

With any approved method, place a chalk line or laser level at the desired start point for the top edge of the bottom row. Install the first row of panels at the floor/base level, moving from the center out, always orienting the panels with the overhang of the acoustic board in the same direction. For vertical panel installations, install the first row of panels starting from the center of the wall out, moving in rows from the bottom to the top. The last panel(s) of the first row will be cut as necessary, again leaving room for any trim. The falloff from the last panel in the run can then be used to begin the next row of panels, trimming it as necessary to achieve proper alignment of the pattern. Any exposed cut ends should be finished as appropriate.

Corners may be miter cut at 45° to continue the pattern, uninterrupted, around the corner. Check before cutting to ensure no staples would be hit with the saw blade.

**Figure 1: Internal and External Miter Cut Corners**



## Wall Installation with Face Screws

Installation of the panels may be done by driving color-matched flat-head or bugle-head screws through the acoustic backer from the face of the panel into the following properly installed substrates:

- ½” or greater plywood,
- ½” or greater drywall using appropriate drywall anchors
- 1” x 2” furring strips installed over plywood or drywall and anchored into studs

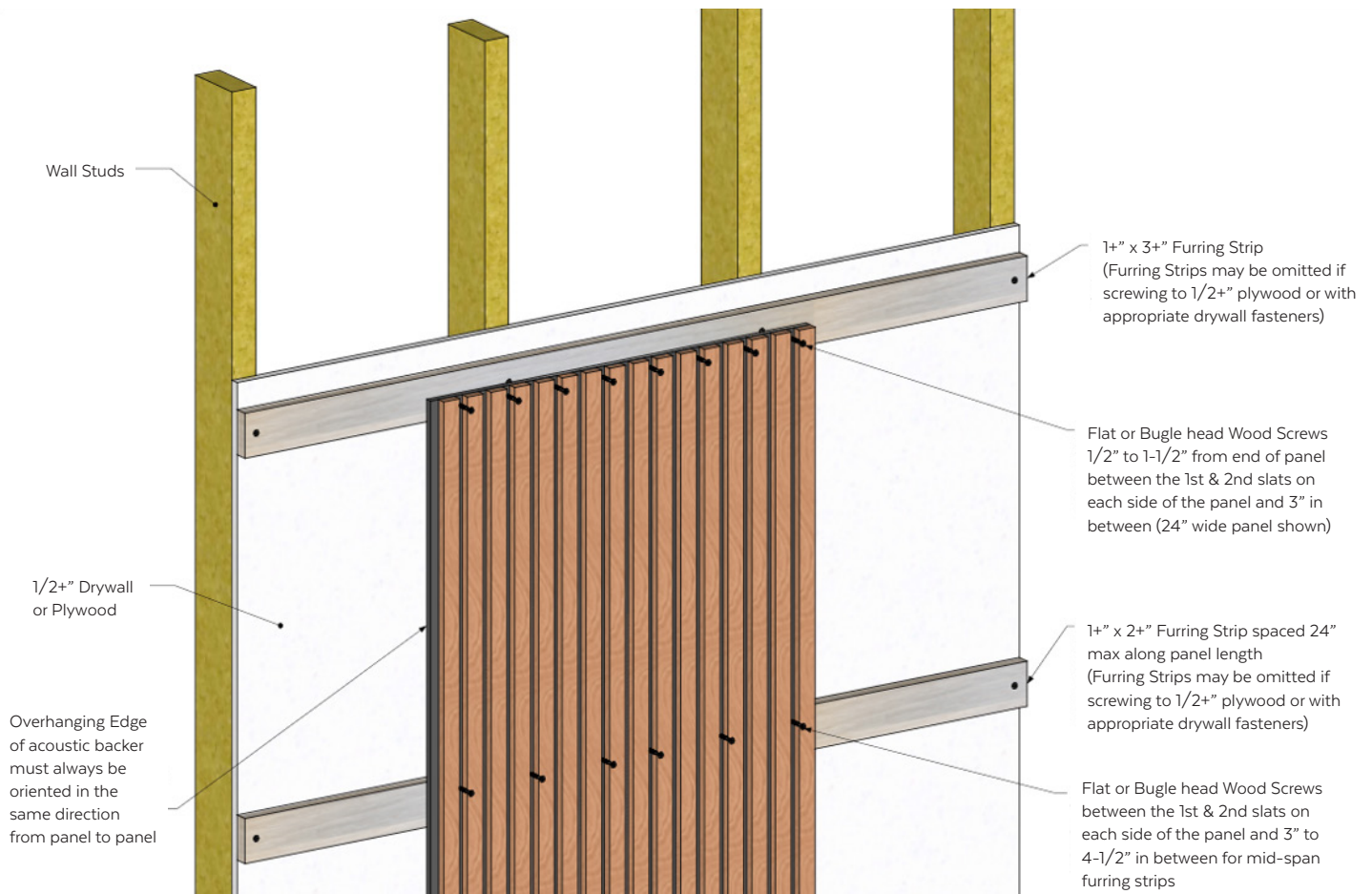
Note: Installation on furring strips creates an air gap behind the panels that increases the acoustic performance of the panels. It is NOT recommended to install on studs or furring strips without plywood or drywall installed on the studs/behind the furring strips.

If used, furring strips must be at least 1” x 2” nominal or larger, all a consistent thickness, must be fastened at appropriate intervals to studs or other structural members, and must run perpendicular to the length of the panels. Furring strips must not be spaced more than 24” apart. Where the ends of two panels meet, wider furring strips may be used to ensure alignment and fastener integrity for both panels.

Whether attaching to plywood, drywall anchors, or furring strips, screws should be installed 1/2” to 1-1/2” from each panel end, between the 1st and 2nd slat from each edge, then approximately every 3” in between (4 screws at each end for panels 12” wide, 8 screws at each end for panels 24” wide). Rows of fasteners along the length of the panel must not be spaced more than 24”, should have fasteners between the 1st and 2nd slat from each edge, then approximately every 3” to 4-1/2” across (3 screws for 12” wide panels, 6 screws for 24” wide panels).

Note: Do not overtighten screws. The acoustic backer is a felted, rigid PET board. Screws should be driven so that the screw head is flush with the top surface of the acoustic backer. Similar to the installation of drywall, screws driven too deep may compromise the ability of the fasteners to hold the panel in place.

**Figure 2: Face Screwing to Walls**



## Wall Installation with Adhesives

Care must be taken specifying a high-quality, elastomeric adhesive that is recommended for the application by the adhesive manufacturer. This includes the suitability of the application and environment, the bond to the acoustic backer made of rigid Polyester PET felt, and the bond to the substrate (wood, drywall - primed or unprimed, concrete, masonry, etc.).

Follow the adhesive manufacturer's recommendations for coverage and installation technique, including the use of any clamps or mechanical fasteners needed while the adhesive cures or thereafter.

Note: Adhesive failure or damage to the panels from incompatible or inadequate adhesives are not covered under the TerraMai warranty, and TerraMai accepts no liability for resulting damages or injury. Panel samples may be ordered and sent to the adhesive manufacturer for their testing.

# CEILING INSTALLATION METHODS *GUIDELINES ONLY*

It is critical to consult with an engineer knowledgeable in local building codes to ensure code compliance and a safe installation for local site conditions. It is up to the installer to choose the most suitable method of installation for the panels for the application. The following are TerraMai's guidelines for a successful installation, and TerraMai accepts no responsibility or liability in respect to installation.

Note: TerraMai's Acoustic Wall Panels are not sized appropriately for the standard T-bar ceiling grid. DO NOT allow any portion of the panel to remain cantilevered or otherwise unsupported.

For ceiling installation of Acoustic Wall Panels, it is suggested that a combination of high-quality, elastomeric adhesives and face screwing into ½" or greater plywood should be used. Follow all requirements of 'Wall Installation with Face Screws' and 'Wall Installation with Adhesives' above regarding installation on plywood. It is NOT recommended to install on drywall on the ceiling.

## FINISHING EDGES & CORNERS

If desired, edges of the installation may be finished with trim pieces. While it is up to the specifier and/or installer to determine the method to trim the installation, there are a couple of common options. Trim may be ordered to specification from TerraMai. Other options are to trim using Schluter profiles Schiene or Deco (visit [Schluter.com](https://www.schluter.com) for more detail), or various profiles from Frye Reglet (visit [FryeReglet.com](https://www.fryereglet.com) for more detail).

For wrapping panels around internal or external corners, there are 2 common methods. For a seamless transition, the panels may be miter cut at 45° and installed without trim. Otherwise, trim pieces may be used. See Figure 1 above.